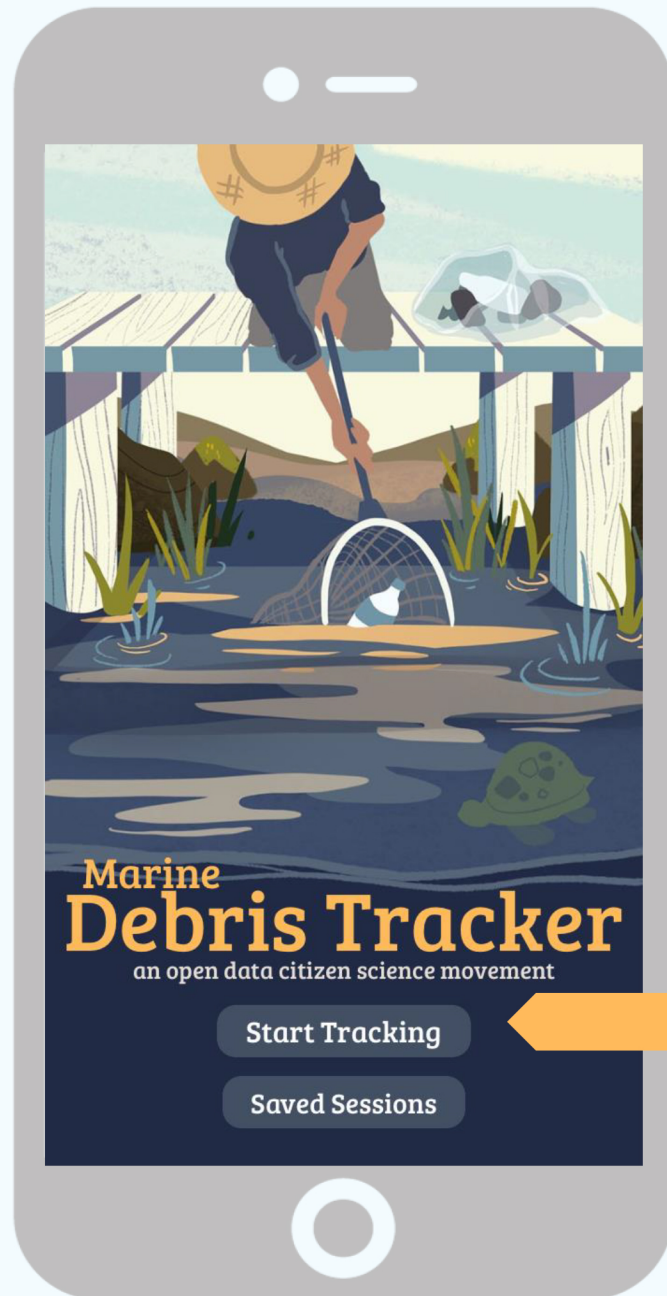


We're so excited you're tracking with Marine Debris Tracker!

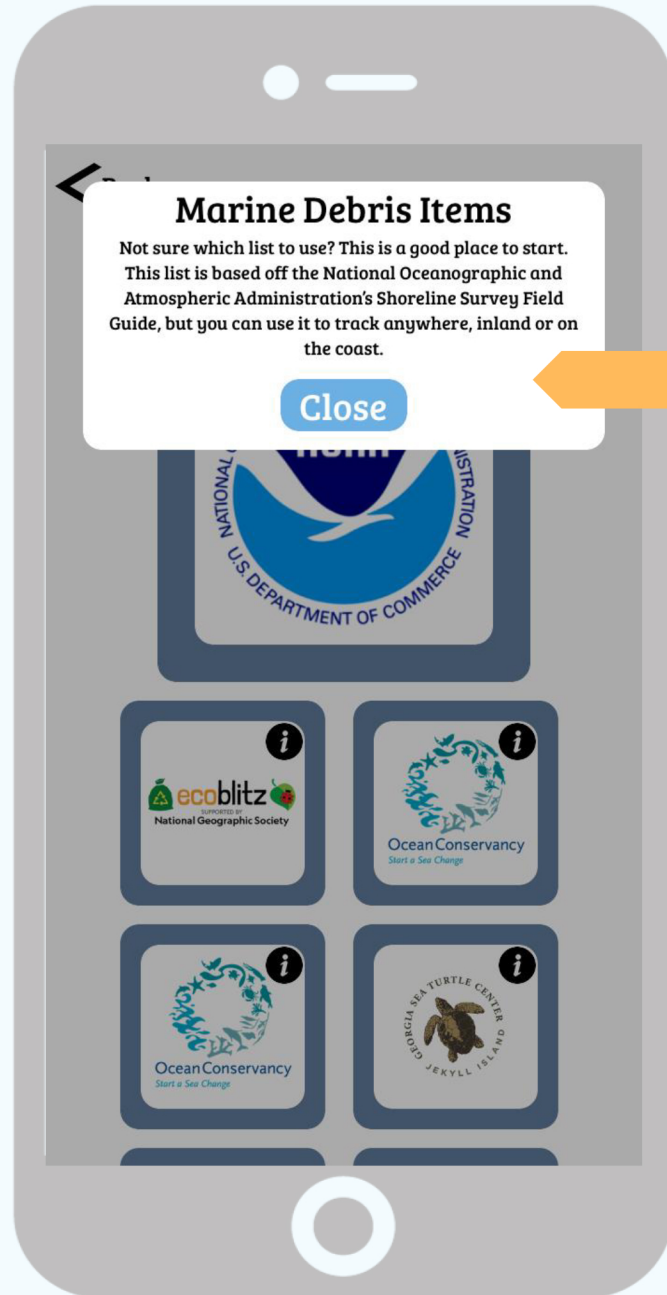
Thank you for joining our open data citizen science movement. Debris Tracker is designed to help citizen scientists like you make a difference. Together, we can create a bigger picture of the marine debris and plastic pollution problems through collecting open data. Your data can generate scientific findings, inform policy, and inspire upstream design. Let's get started!




Then choose **Northcoast Environmental Center (NEC)** from the list of organizations. This **NEC** list best reflects common debris found in Humboldt County.

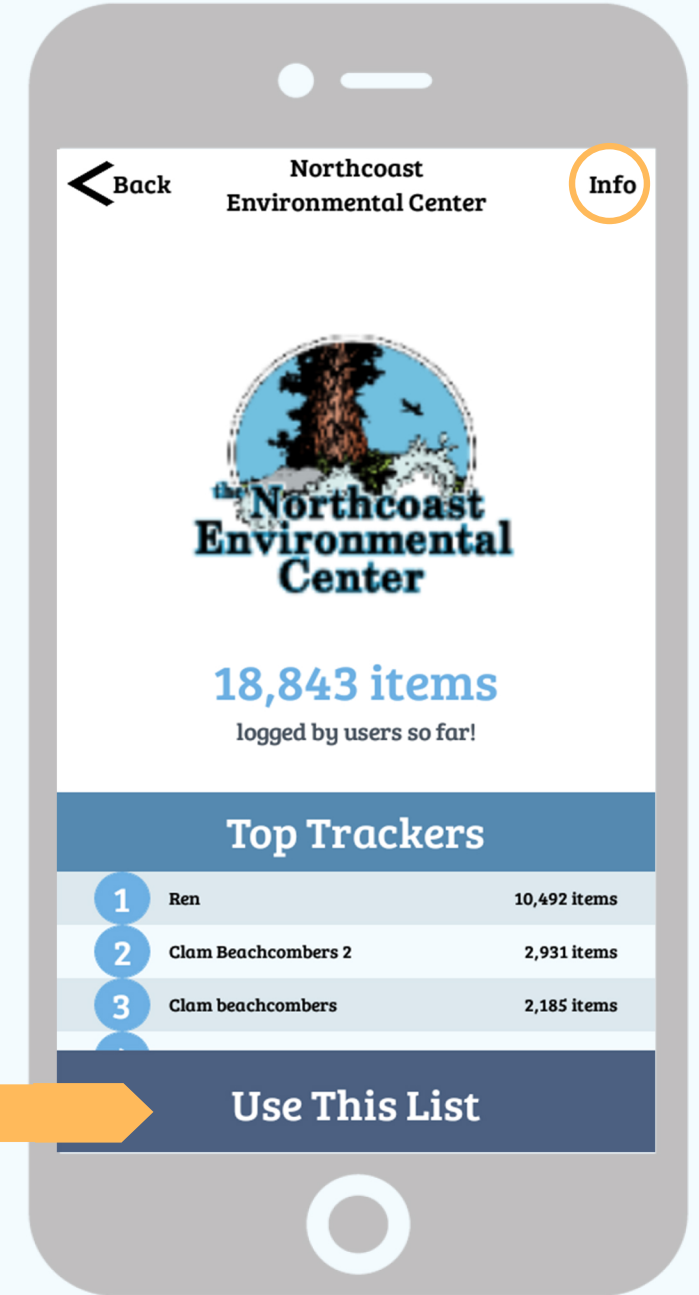
Hit the “Start Tracking” Button to begin a new session!





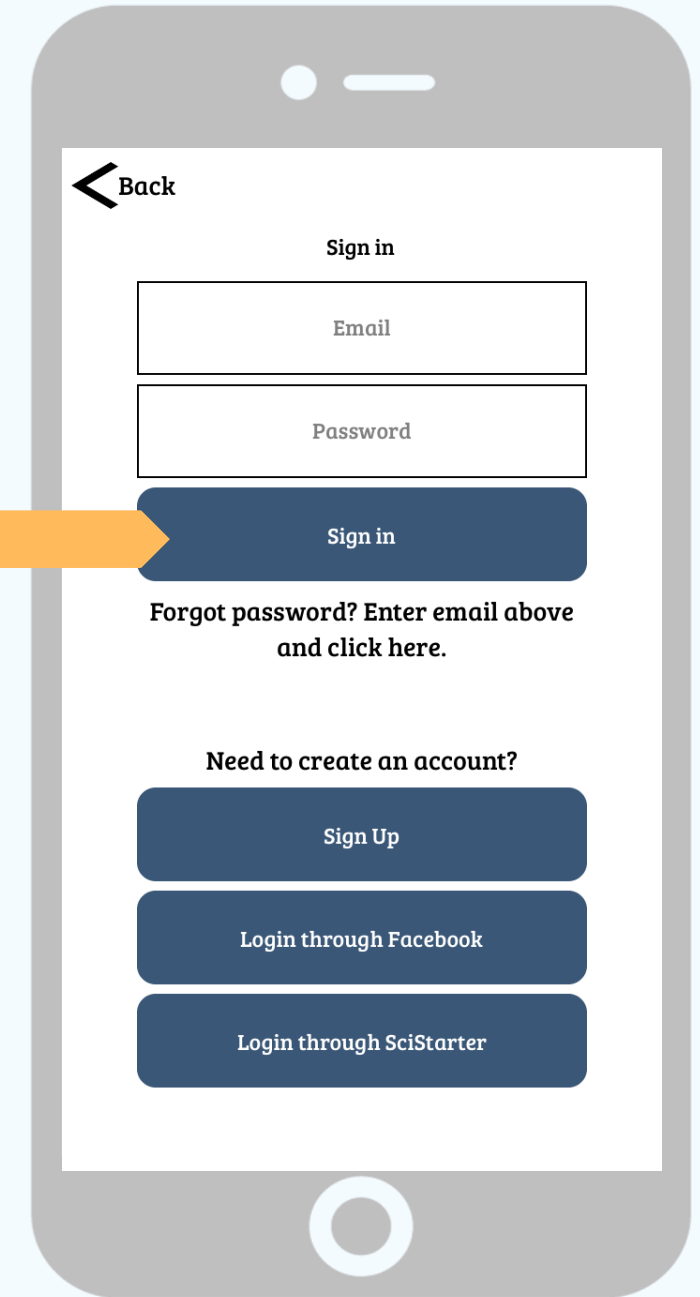
Click the  or Info icon to learn more about a list


Click the list icon to open the list and see the Top Trackers. When you're ready, click "Use This List" to start tracking!

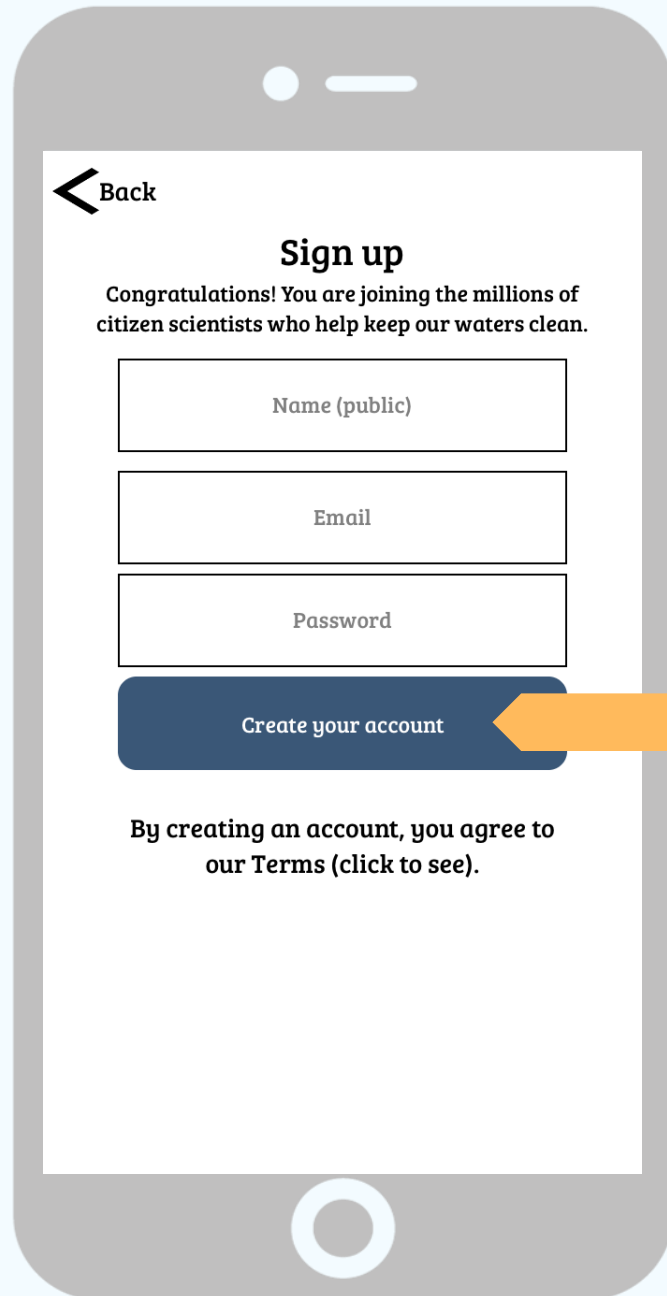




If you're new here, hit the "Sign Up" button to create a new account. Returning user? You can sign in with your email and password, or login through Facebook or SciStarter.



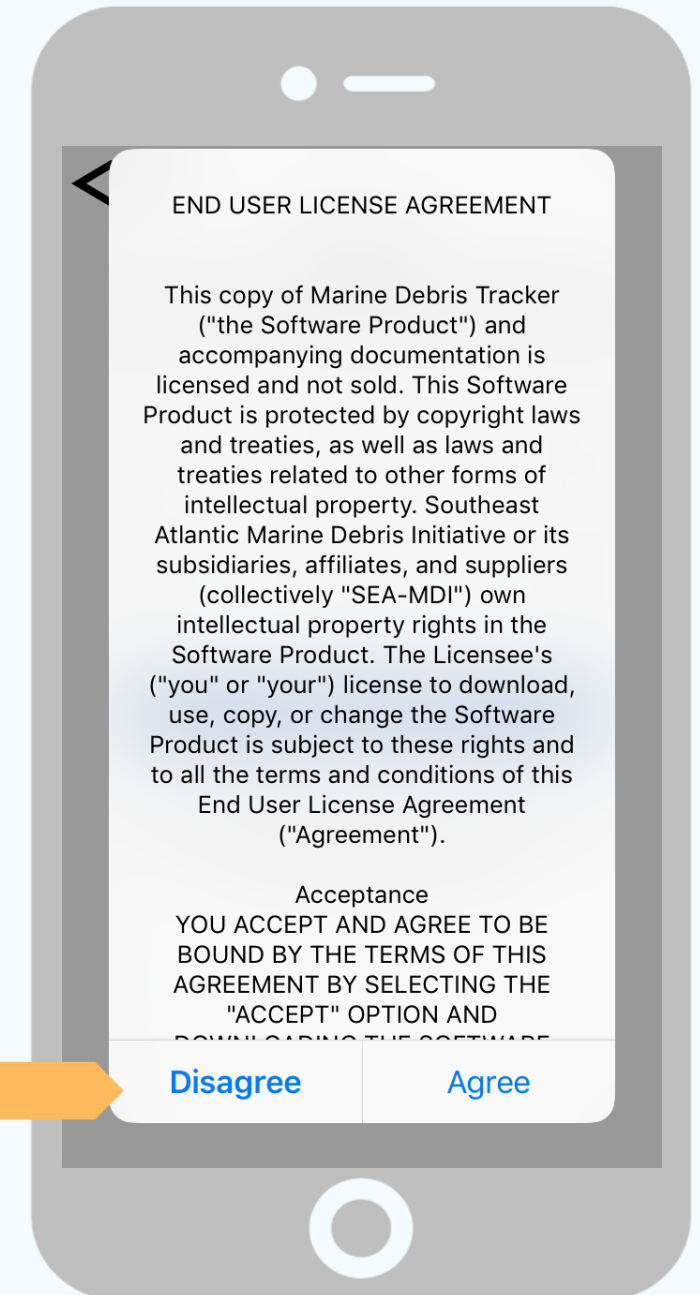
Once you've selected your list, hit the  to open the login page.



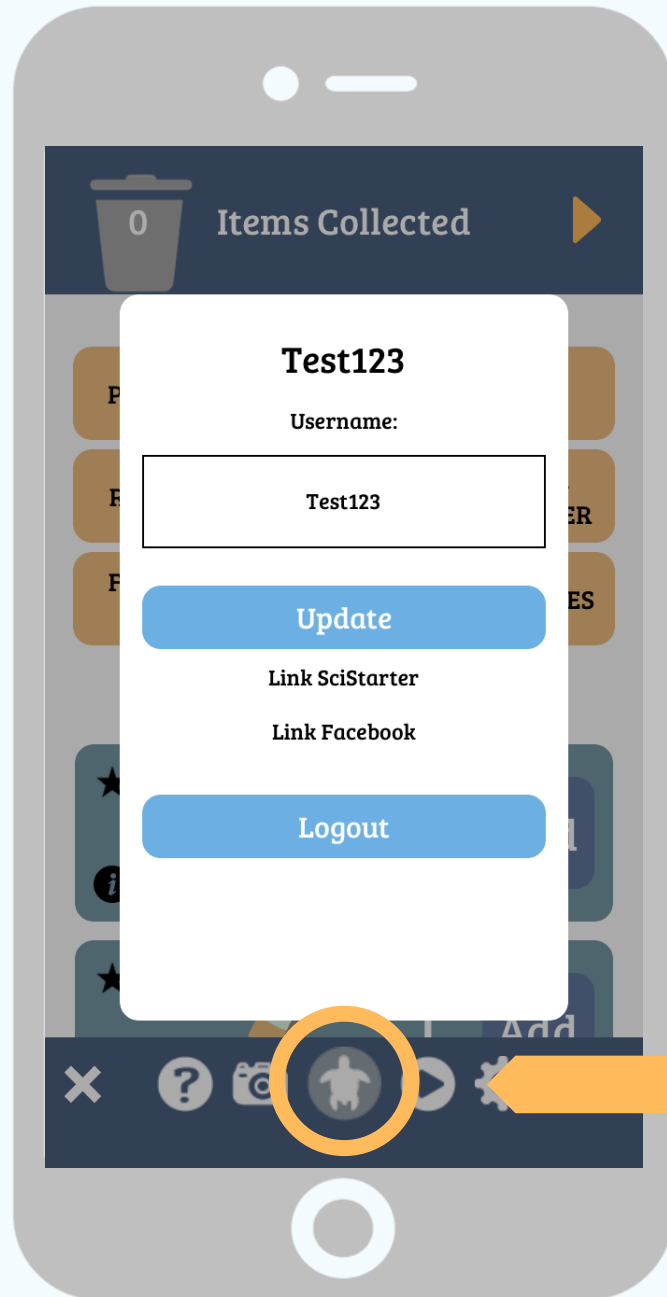
The smartphone screen displays a 'Sign up' form. At the top left is a back arrow and the word 'Back'. Below this is a heading 'Sign up' followed by a congratulatory message: 'Congratulations! You are joining the millions of citizen scientists who help keep our waters clean.' The form consists of three input fields: 'Name (public)', 'Email', and 'Password'. Below these fields is a dark blue button labeled 'Create your account'. At the bottom of the screen, there is a line of text: 'By creating an account, you agree to our Terms (click to see)'.


Enter a public
username and a
unique email and
password. You will
need to verify your
email address to
create your account.


By creating an
account, you agree to
our terms – that you
want to share your
litter data freely and
publicly!

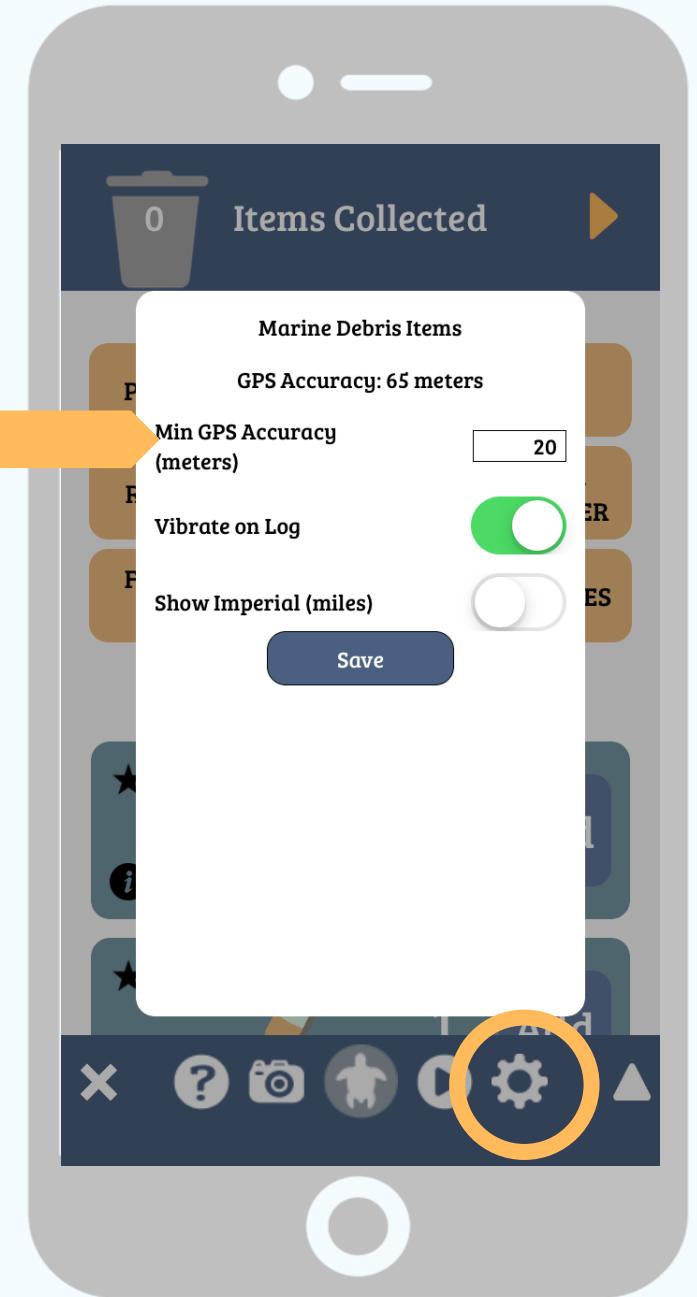


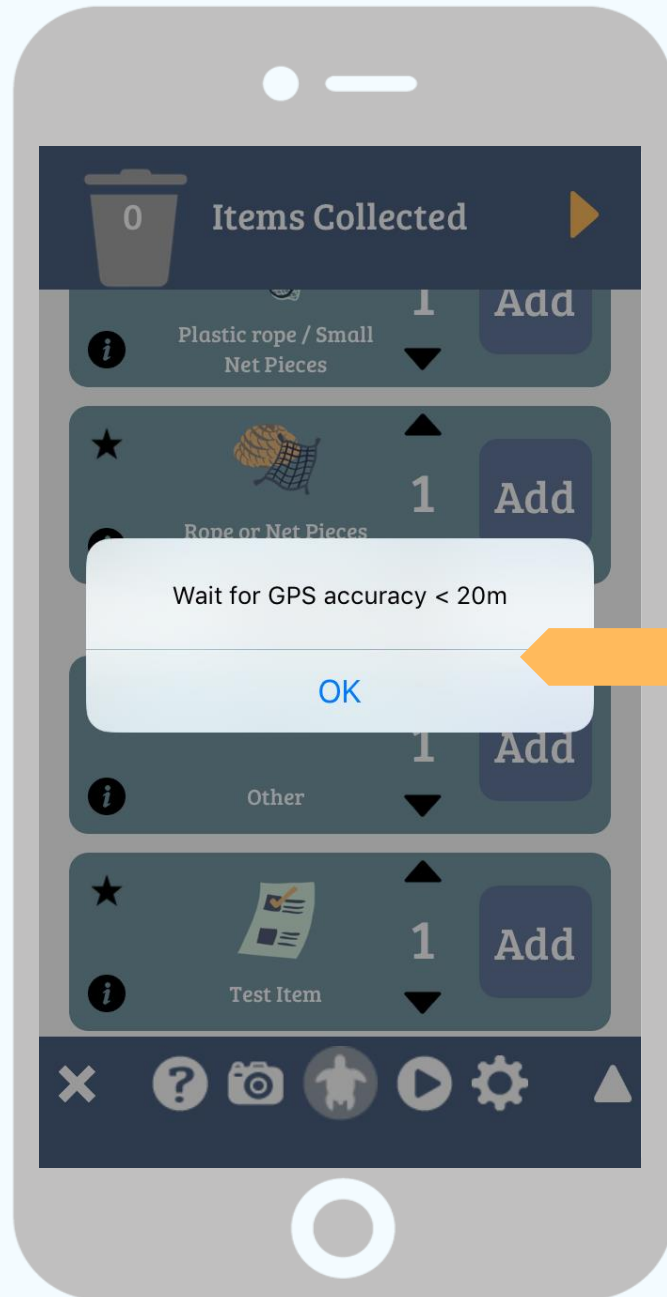
The smartphone screen displays an 'END USER LICENSE AGREEMENT'. It features a back arrow at the top left. The main text is a license agreement for 'Marine Debris Tracker ("the Software Product")'. It states that the software is licensed and not sold, protected by copyright laws, and owned by the 'Southeast Atlantic Marine Debris Initiative or its subsidiaries, affiliates, and suppliers (collectively "SEA-MDI")'. It grants the licensee a license to download, use, copy, or change the software, subject to the terms of the agreement. At the bottom, there is a section for 'Acceptance' with the text: 'YOU ACCEPT AND AGREE TO BE BOUND BY THE TERMS OF THIS AGREEMENT BY SELECTING THE "ACCEPT" OPTION AND DOWNLOADING THE SOFTWARE'. Below this text are two buttons: 'Disagree' and 'Agree'.



The  icon allows you to view your current GPS accuracy and set a minimum accuracy for logging. You can also turn off the log vibration and change the units.

Hit the  icon to see your username. You can also Link SciStarter or Facebook after creating an account.





Once you set a minimum GPS accuracy, you will get a notification that asks you to wait to log items if your phone's GPS accuracy is too high.

Accuracy will vary depending on your device. Some phones can take a few moments after opening the app to calibrate GPS location. Wait a few seconds and try again. If you're still not having any luck, try closing and reopening the app to restart location calibration. Ensure your permissions allow Marine Debris Tracker to know your location.

GPS accuracy needs depends on the specific project. If you're using Marine Debris Tracker for research, we recommend setting a low accuracy minimum.




As you're tracking, click on a section to jump to that part of the list.

Hit the  button to jump back to the top of the list.

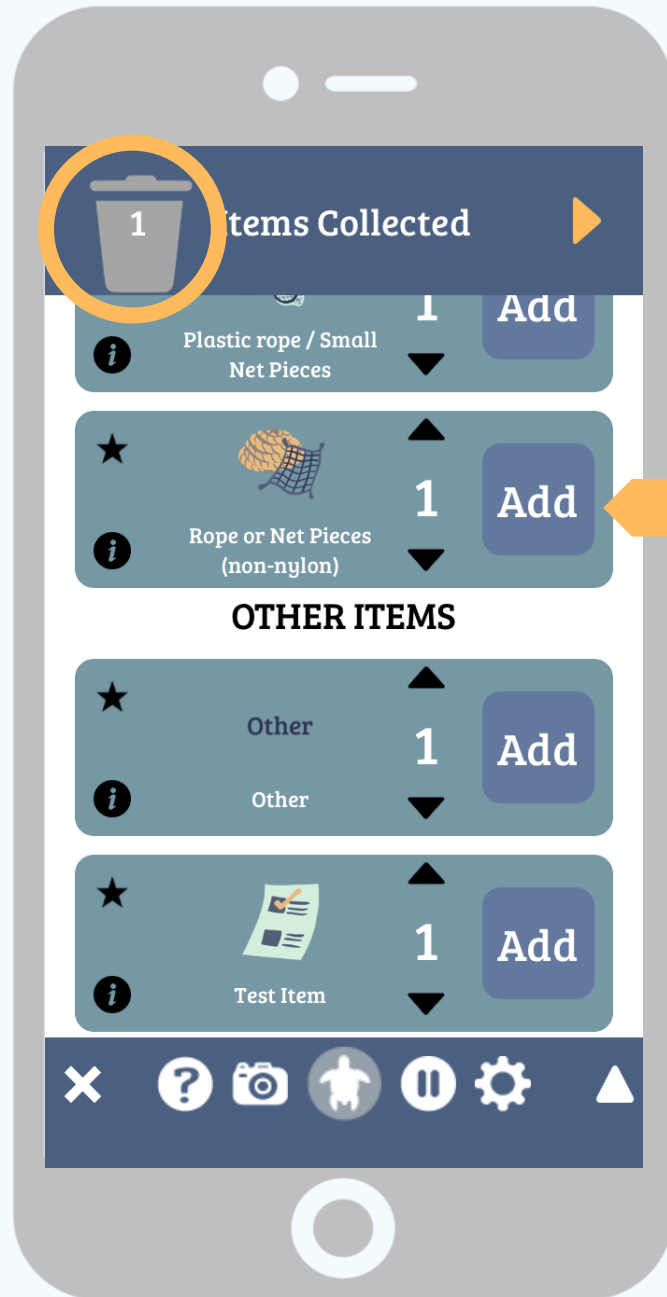




Click the ★ in the upper right hand corner to add an item to your personalized “Favorites” section. Great for making it easy to track common items in your area!

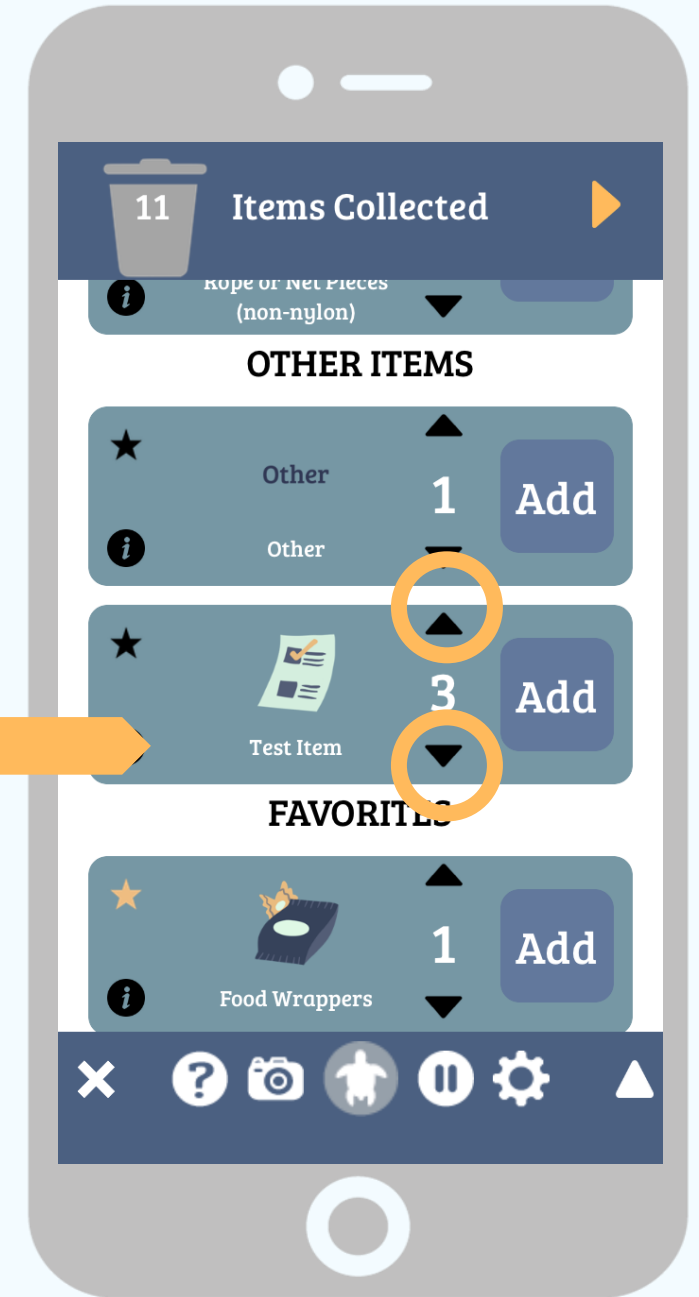
Click the  icon to add a description of the item you’re logging or see more info on the item!





Just hit the “Add” button to add one of the item to your items collected!

More than one item? Use the up or down arrows to change the quantity before hitting “Add”. You can also hit the number to directly type in the quantity.





This icon will take you to our website Getting Started page, where you can access our tutorial video.



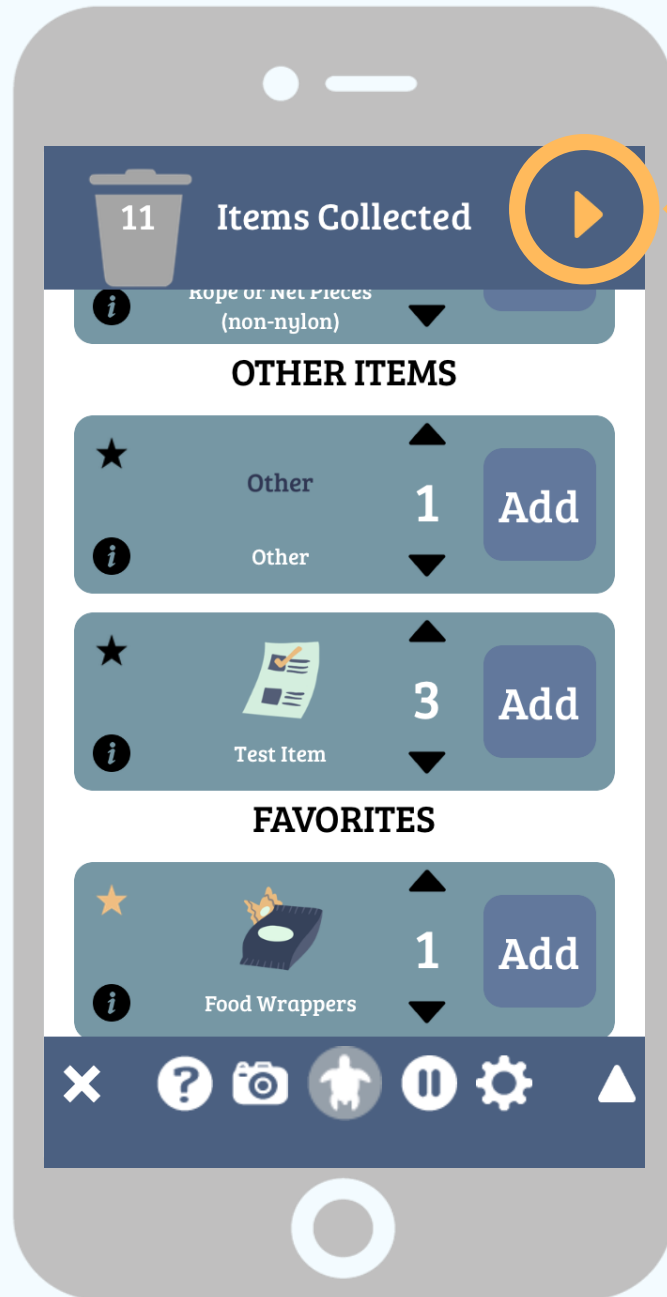
Hit the camera icon to take a litter photo! We recommend taking a photo of your aggregated cleanup. Depending on your phone and internet connection, it may be difficult to upload large quantities of photos to our database.



The pause/play button turns path logging on and off. Path logging shows us where you walked while tracking, so we know where litter is not. This is important to statistically analyze the data! Path logging starts automatically when you start logging, but you can pause it at any time.

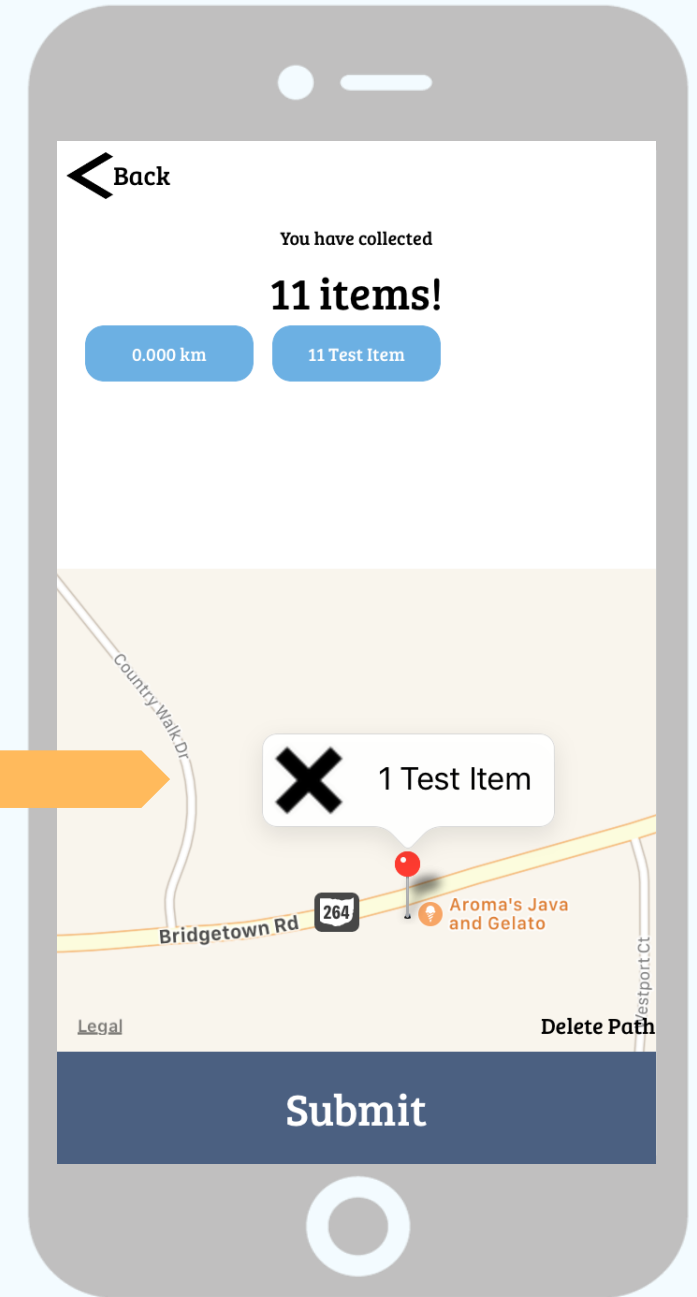


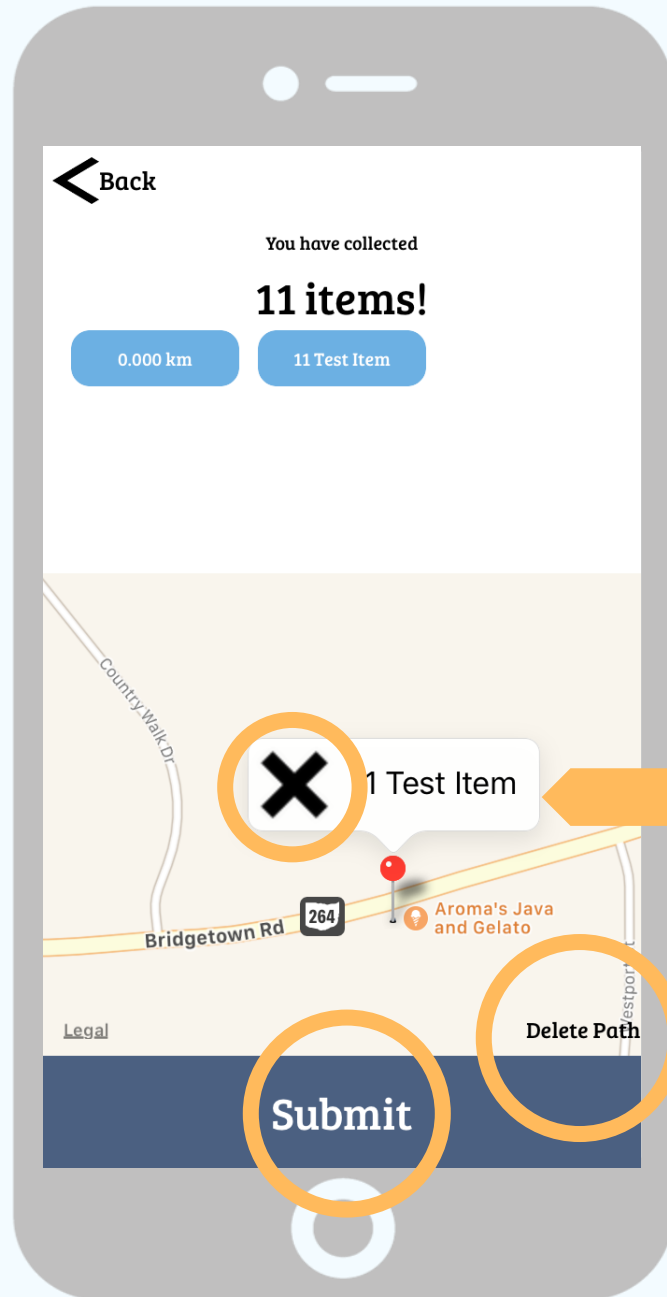
Hit the “X” button to go back and select a different list for tracking. Warning: If you have not saved your session, this will delete your data!



When you're done tracking, hit the forward arrow to view your data map.

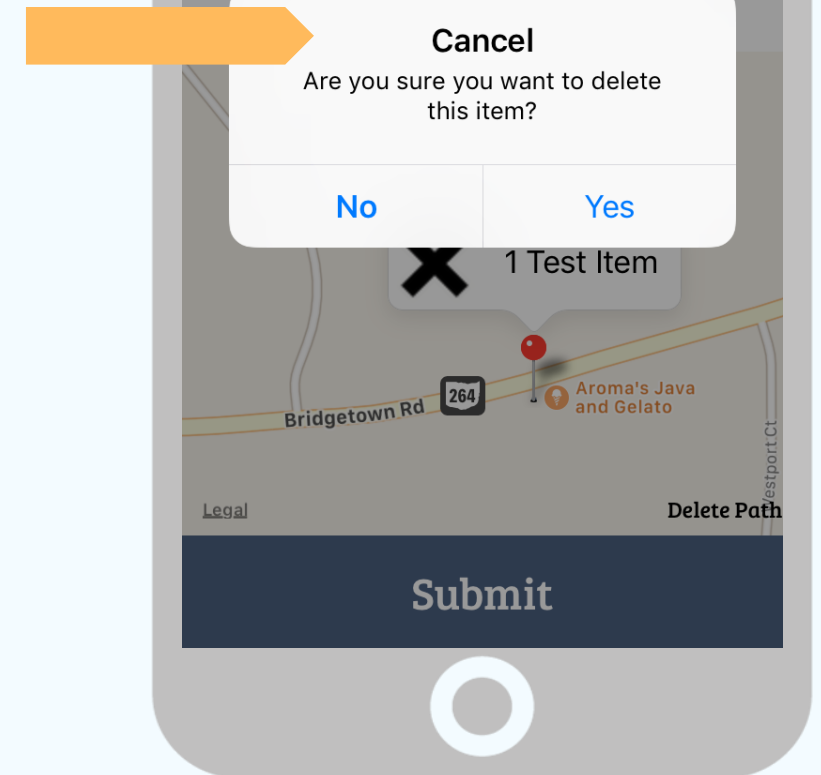
Review the items you've logged and your path here.

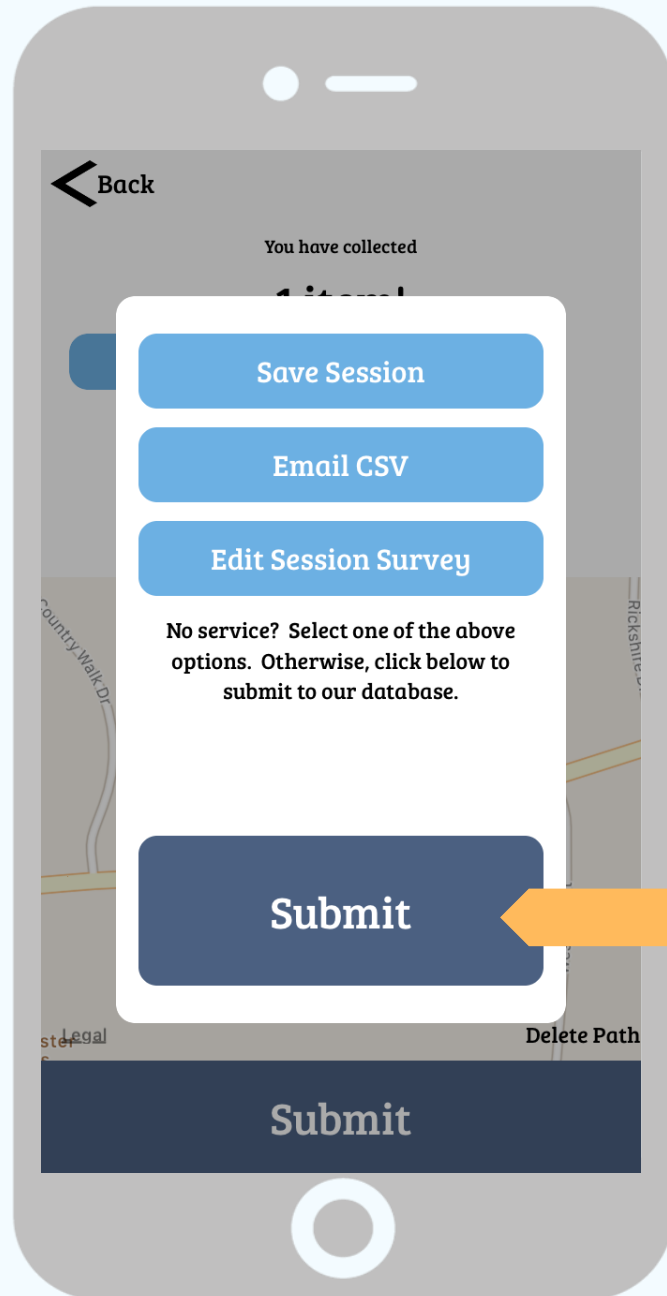




If you choose to delete any items, you will receive a confirmation message before they are removed from your log.

Hit the X Button to delete an item. You can also delete your path if it is inaccurate. If your map is good to go, hit the submit button!

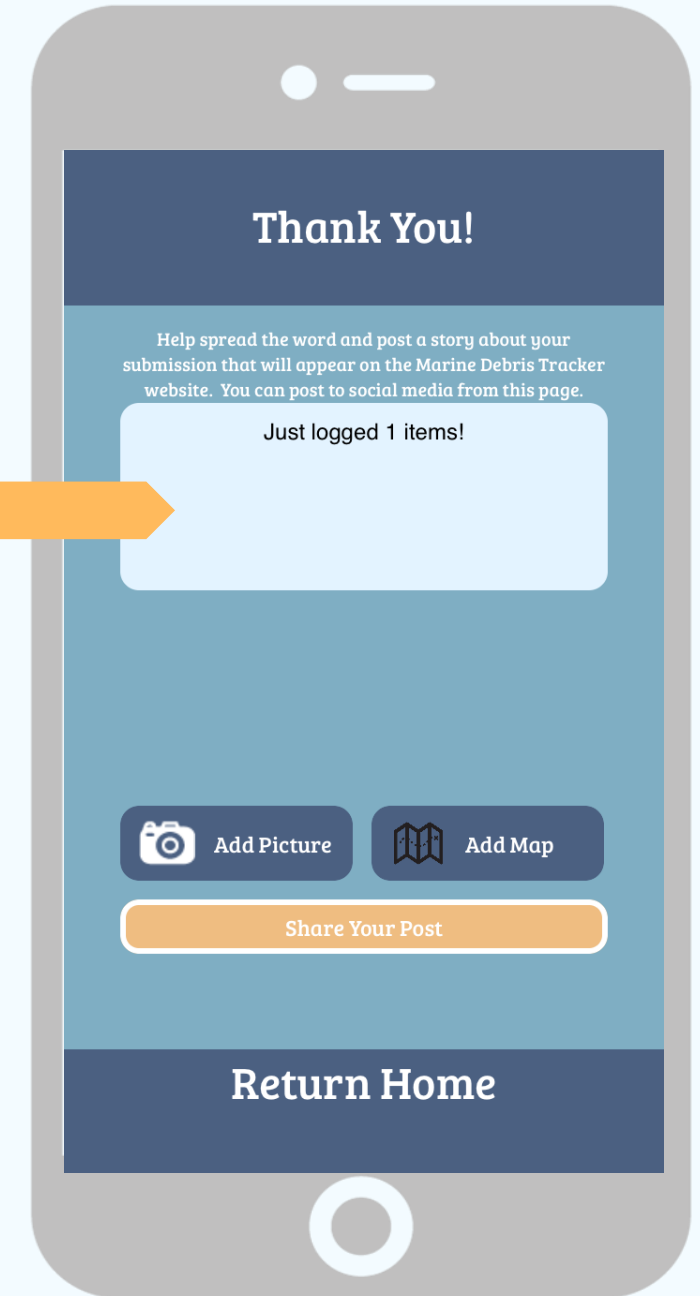




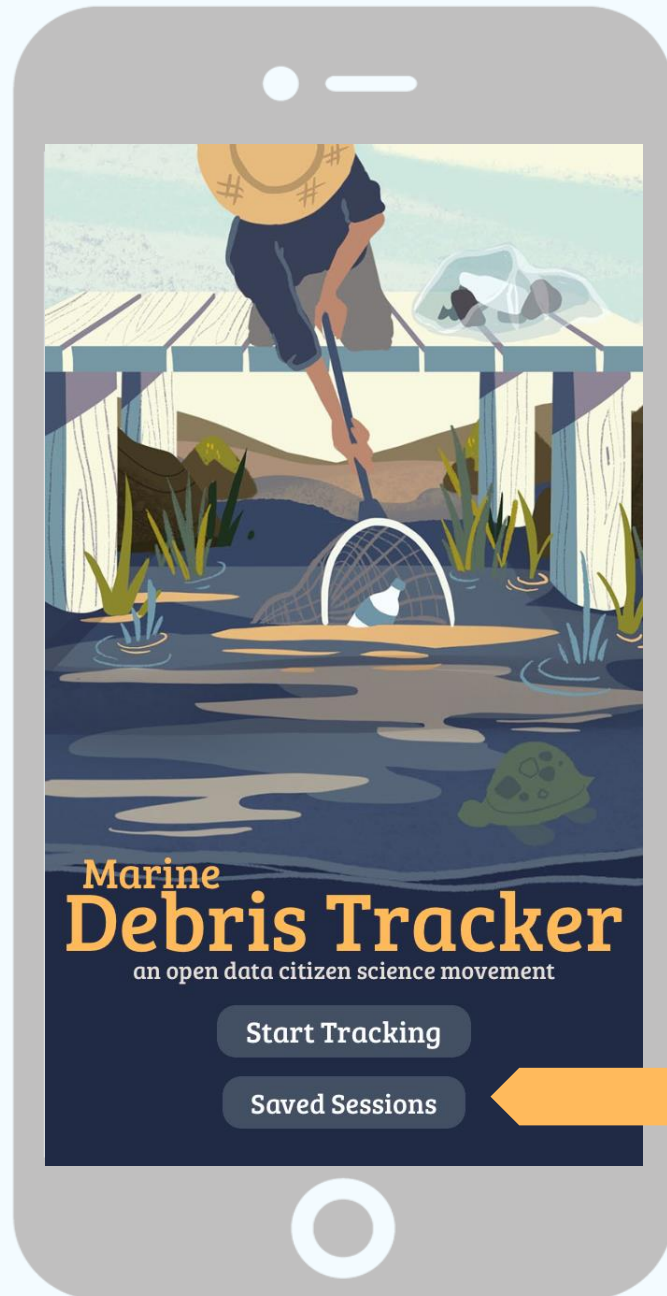
You're good to go! Share your tracking on social media to spread the word. Thank you for tracking!



You will be able to save your session for later, or email yourself a CSV. If you have access to Wi-Fi or data, you can go ahead and hit Submit to upload your data to our database!

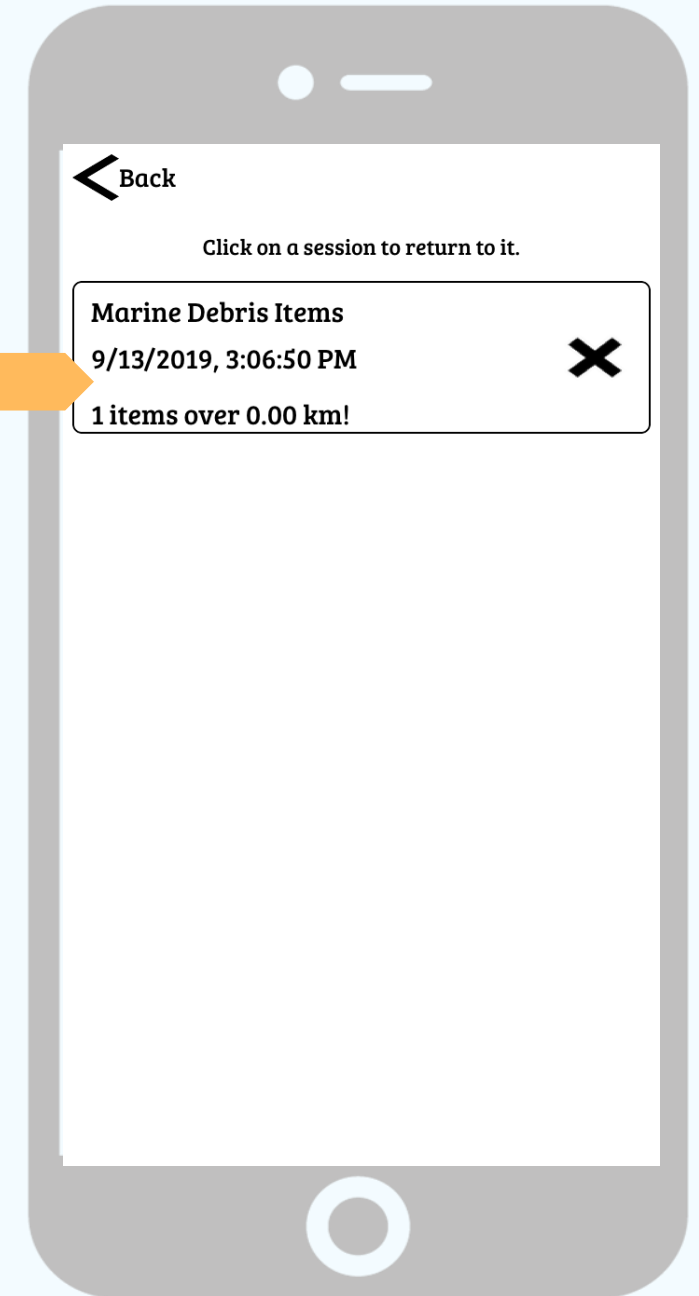


Share Your Post



Click on your session to reopen it! You can review your map and Submit to our database with Internet access.

If you aren't able to submit your data from the field, click on Saved Sessions from the home screen to access your data.

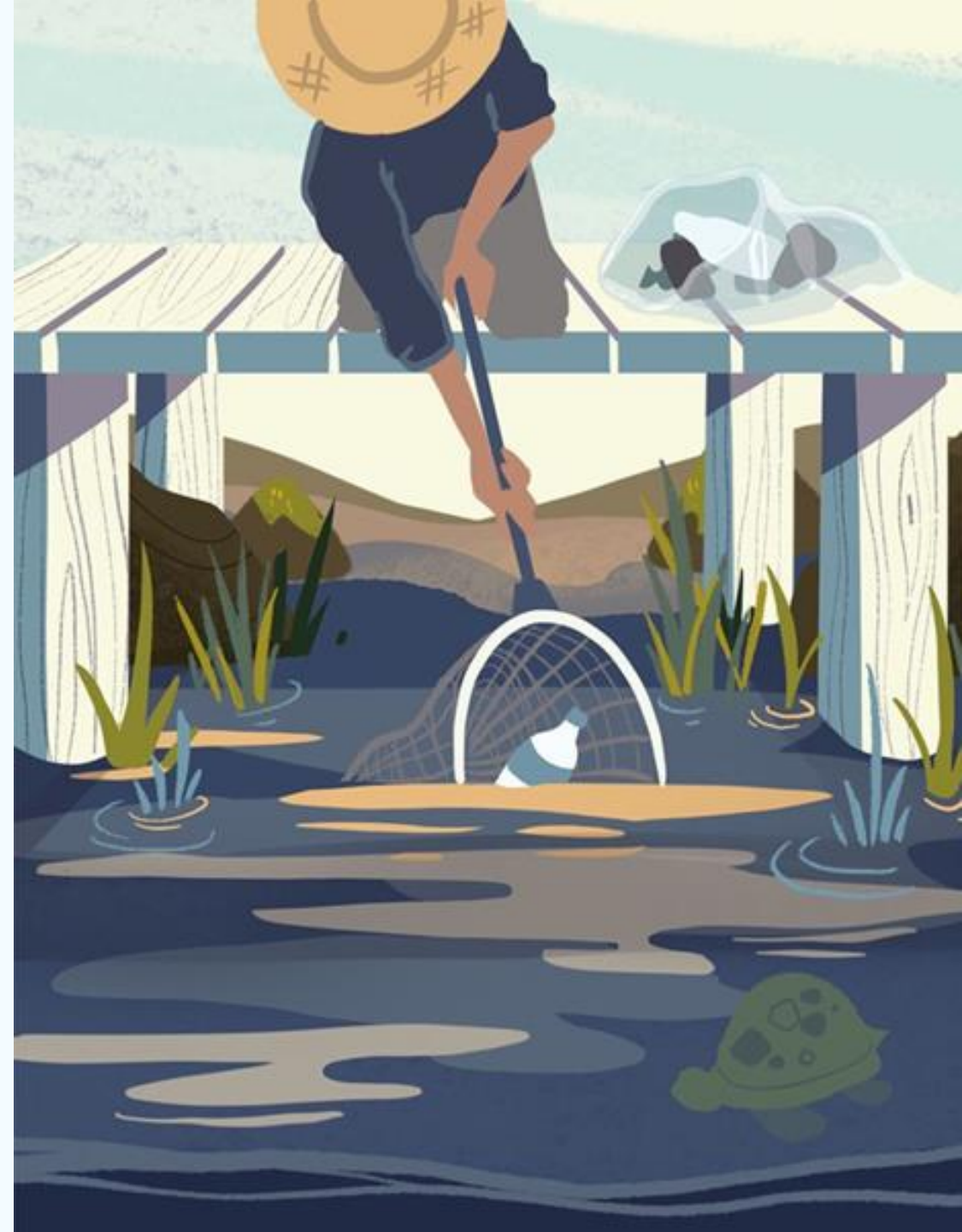


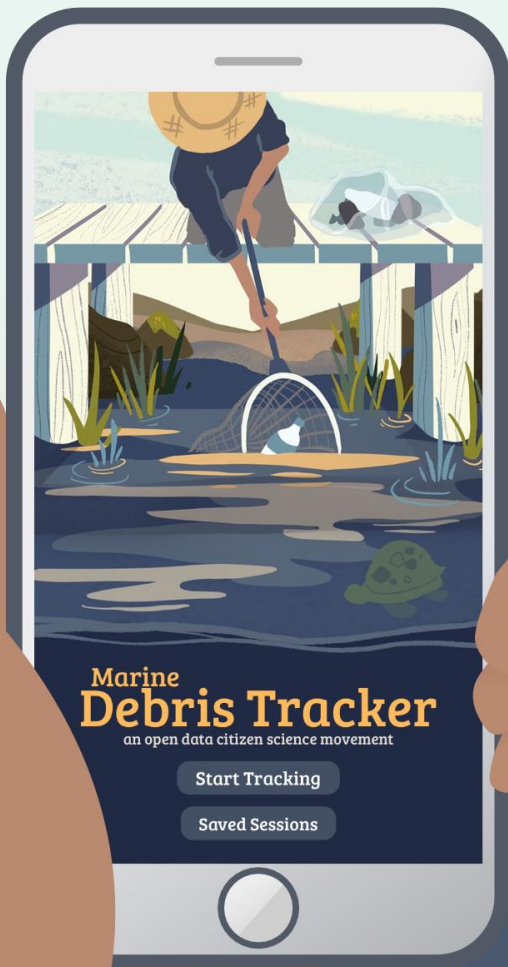
Other Things to Note

Our name may be Marine Debris Tracker, but we want your data on litter wherever you find it, from the ocean to your backyard!

Our app can be used without Internet access as long as you have a GPS signal. You will need to open the app once and load your list before tracking offline. You will need Internet access to submit to our database, but you can save your session in offline mode.

You can access your data anytime on our online data platform!





Let's stay in touch!

Questions, concerns, or feedback? Please reach out to us at sea.marine.debris@gmail.com.

If you'd like to collaborate with us by adding a list to the app, please send us a brief description of your organization and tell us how you plan to use it!

Join our community of citizen scientists by following us on Twitter or Facebook!

@DebrisTracker

